

The pioneer in Korean dental implants is now working with the world !  
[www.cowellmedi.com](http://www.cowellmedi.com)



# BIO-C

$\beta$ -TCP/HA(7:3), Synthetic bone graft

**CWM**  
Cowellmedi Co., Ltd.

**COWELLMEDI IMPLANT SYSTEM**

# BIO-C $\beta$ -TCP/HA(7:3), Synthetic bone graft

## Osteoconductive resorbable synthetic bone graft material

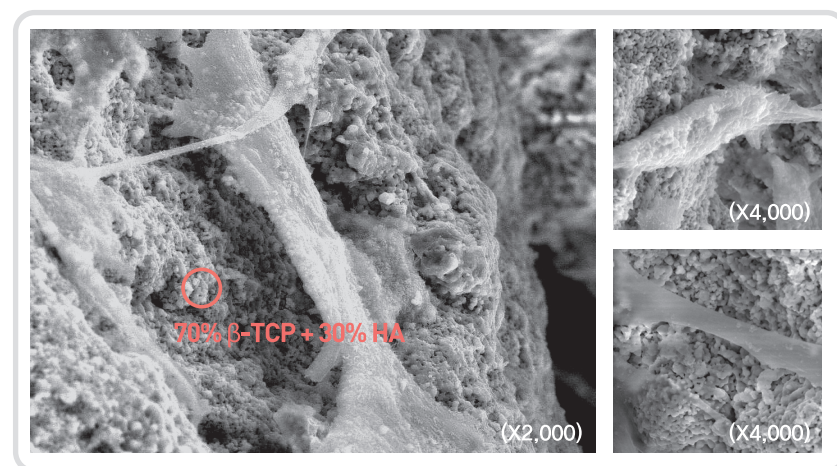
Bio-C is a osteoconductive synthetic resorbable bone graft material consist of  $\beta$ -TCP/HA.  
Bio-C is completely resorpted and progressively replaced by normal-structured bone in the healing period.

\* TCP : Tricalcium Phosphate, HA : Hydroxyapatite

## Excellent Biocompatibility and conductivity

The characteristic biocompatibility and conductivity of Bio-C represent the most safety.

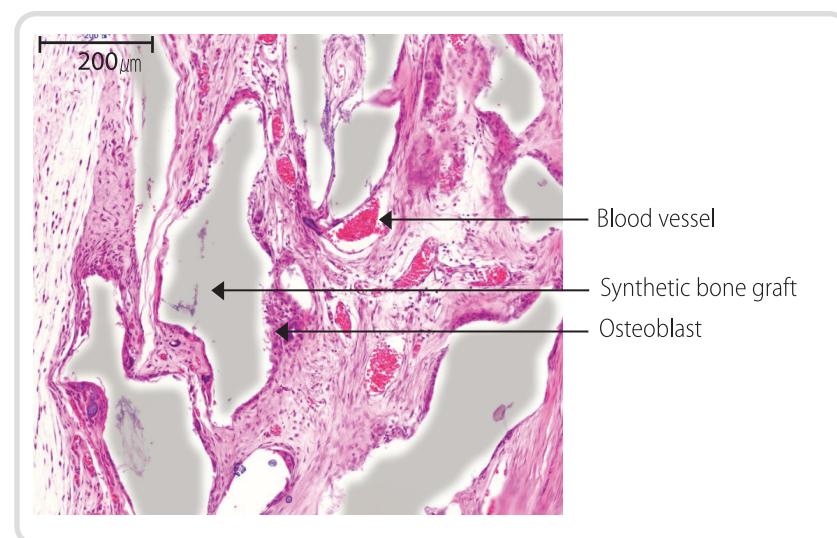
Cell culture SEM image (7 days)



## Powerful osteoconduction

- > This photomicrograph shows incipient bone formation in rat calvarial defect model.
- > Many osteoblasts are gathered around Bio-C particles.
- > Osteoblasts migrate into the graft material and when they reach a critical concentration they stop migration and begin organizing bone production.

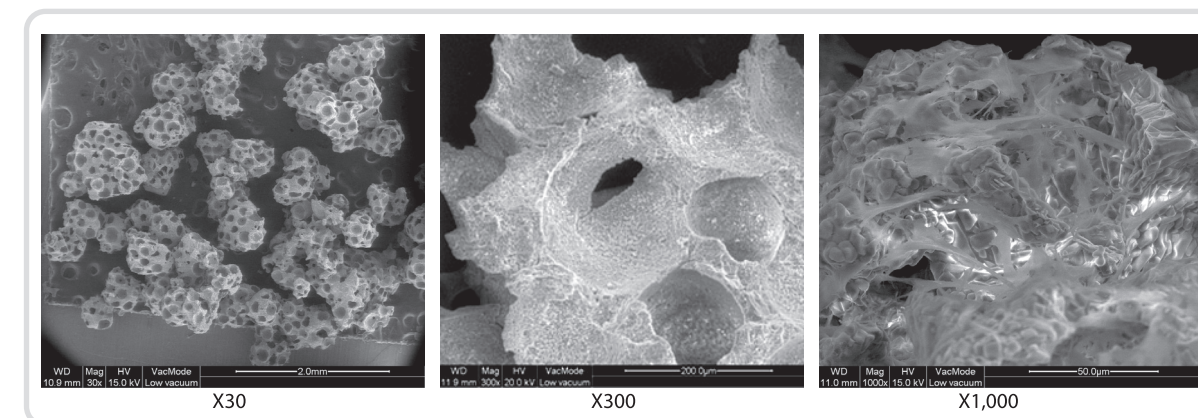
3 weeks Post surgery, 10X magnification (Rat calvarial defect model)



## A porosity for new bone ingrowth

The porosity of Bio-C promotes ingrowth of osteoblast, osteoclast and growth factors.

Pariticle surface SEM image



## Indications

### Sinus graft surgery

- > For sinus graft, Bio-C is used alone or in combination with the other graft materials.
- > Various healing period according to residual bone height.

residual bone height	less than 1 mm	2 ~ 4 mm	more than 4 mm
implant placement	post operation 9~12 months	post operation 6 months	simultaneous placement

### GBR (Guided Bone Regeneration)

- > Minimize the amount of autogenous bone.
- > Sub-graft materials.

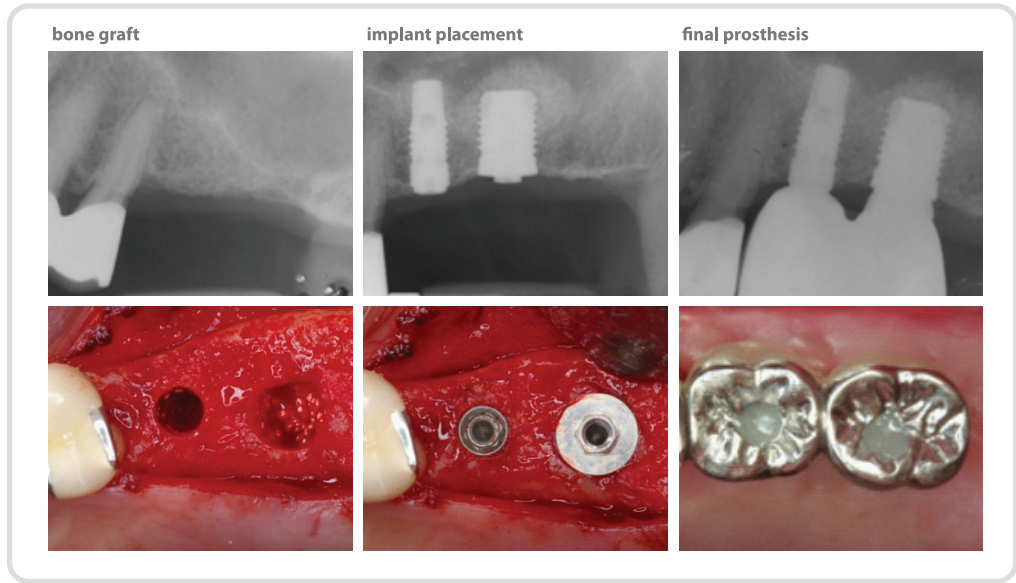
## Product specifications

Product #	Product Size	Volume
TB1020	0.41~1.0mm	0.2g
TB1025	0.41~1.0mm	0.25g
TB1050	0.41~1.0mm	0.5g

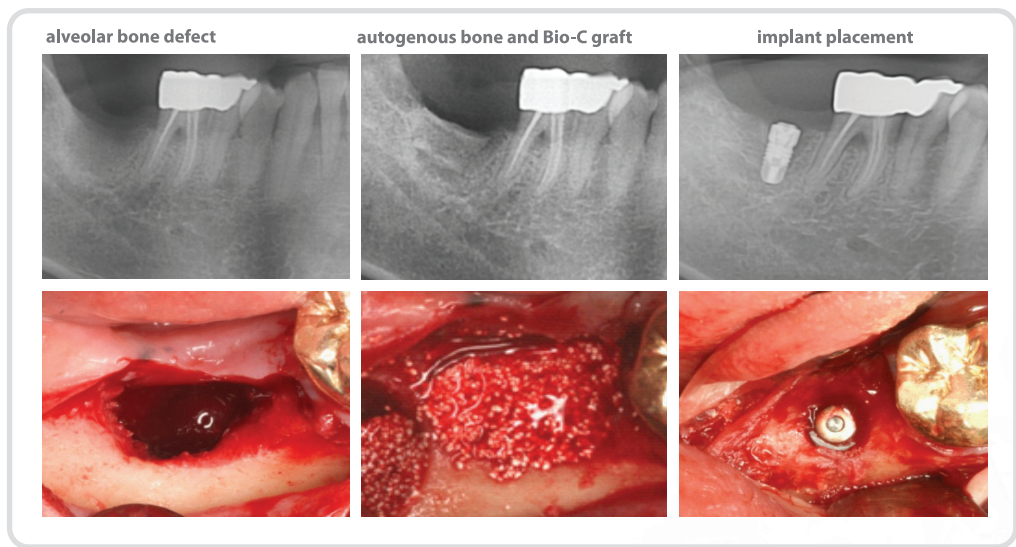


Clinical Application

Sinus graft surgery



Bio-C graft accompanied by autogenous bone



※ Lists of CowellMedi Products for Bone Grafting

Product		Code
	CowellBMP 0.1 / 0.25g	BB1010 / 1025
	Bio-C 0.25g Bio-C 0.5g	TB0425 / 1025 /1425 TB0450 / 1050 /1450
	BOSS Type I Body Cuff 2 / 3 / 4mm	BSSB420 / 430 / 440 <small>*Extra product</small>
	BOSS Type I Healing (Cover)	BSSH001
	BOSS Type I Temporary Post (Guide)	BSST001
	BOSS Type II Screw Length 6 / 10mm	BSSS2306 / 2310
	BOSS Type II Healing (Cover)	2BSSC001
	BOSS Type II Temporary Post (Guide)	2BSSG001
	Screw Driver	KBSD01
	0.9 Hex Driver	KHD0915 / 0921 / 0927
	Teflon Sheet 17X25 ,T:0.2 / 24X30 ,T:0.2	TS17252 / 24302
	Titanium Mesh 25X34, T:0.1	TMP211
	BOSS Case	KBC001